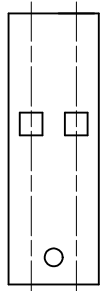
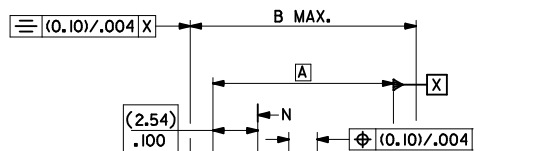
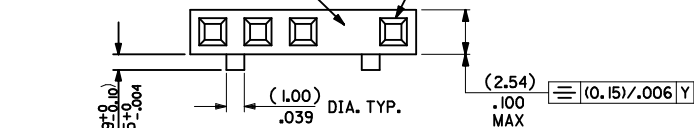


SEE SHT 2 FOR  
VOIDED OPTIONS

CCT. No. 1



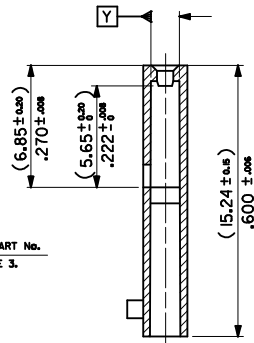
2 CKTS  
ONLY.

3 TO 32 CKTS.

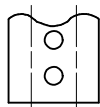
**2 POLARISING BUTTON VERSION**

MOLEX IDENT, PLACE OF  
MANUF. AND CAVITY IDENT.  
SEE NOTE 3

MOLEX PART No.  
SEE NOTE 3.



SECTION N-N  
(THROUGH VOIDS  
WHERE APPLICABLE)



2 CKTS.  
ONLY.

3 TO 32 CKTS.

**4 POLARISING BUTTON VERSION**

NO. OF CKTS	PART NUMBER		DIM A	DIM B	DIM C
	2 BUTT'S	4 BUTT'S			
2	90123-0102	90123-0202	(2.54)/0.100	(5.08)/0.200	---
3	90123-0103	90123-0203	(5.08)/0.200	(7.62)/0.300	(2.54)/0.100
4	90123-0104	90123-0204	(7.62)/0.300	(10.16)/0.400	(5.08)/0.200
5	90123-0105	90123-0205	(10.16)/0.400	(12.70)/0.500	(7.62)/0.300
6	90123-0106	90123-0206	(12.70)/0.500	(15.24)/0.600	(10.16)/0.400
7	90123-0107	90123-0207	(15.24)/0.600	(17.78)/0.700	(12.70)/0.500
8	90123-0108	90123-0208	(17.78)/0.700	(20.32)/0.800	(15.24)/0.600
9	90123-0109	90123-0209	(20.32)/0.800	(22.86)/0.900	(17.78)/0.700
10	90123-0110	90123-0210	(22.86)/0.900	(25.40)/1.000	(20.32)/0.800
11	90123-0111	90123-0211	(25.40)/1.000	(27.94)/1.100	(22.86)/0.900
12	90123-0112	90123-0212	(27.94)/1.100	(30.48)/1.200	(25.40)/1.000
13	90123-0113	90123-0213	(30.48)/1.200	(33.02)/1.300	(27.94)/1.100
14	90123-0114	90123-0214	(33.02)/1.300	(35.56)/1.400	(30.48)/1.200
15	90123-0115	90123-0215	(35.56)/1.400	(38.10)/1.500	(33.02)/1.300
16	90123-0116	90123-0216	(38.10)/1.500	(40.64)/1.600	(35.56)/1.400
17	90123-0117	90123-0217	(40.64)/1.600	(43.18)/1.700	(38.10)/1.500
18	90123-0118	90123-0218	(43.18)/1.700	(45.72)/1.800	(40.64)/1.600
19	90123-0119	90123-0219	(45.72)/1.800	(48.26)/1.900	(43.18)/1.700
20	90123-0120	90123-0220	(48.26)/1.900	(50.80)/2.000	(45.72)/1.800
21	90123-0121	90123-0221	(50.80)/2.000	(53.34)/2.100	(48.26)/1.900
22	90123-0122	90123-0222	(53.34)/2.100	(55.88)/2.200	(50.80)/2.000
23	90123-0123	90123-0223	(55.88)/2.200	(58.42)/2.300	(53.34)/2.100
24	90123-0124	90123-0224	(58.42)/2.300	(60.96)/2.400	(55.88)/2.200
25	90123-0125	90123-0225	(60.96)/2.400	(63.50)/2.500	(58.42)/2.300
26	90123-0126	90123-0226	(63.50)/2.500	(66.04)/2.600	(60.96)/2.400
27	90123-0127	90123-0227	(66.04)/2.600	(68.58)/2.700	(63.50)/2.500
28	90123-0128	90123-0228	(68.58)/2.700	(71.12)/2.800	(66.04)/2.600
29	90123-0129	90123-0229	(71.12)/2.800	(73.66)/2.900	(68.58)/2.700
30	90123-0130	90123-0230	(73.66)/2.900	(76.20)/3.000	(71.12)/2.800
31	90123-0131	90123-0231	(76.20)/3.000	(78.74)/3.100	(73.66)/2.900
32	90123-0132	90123-0232	(78.74)/3.100	(81.28)/3.200	(76.20)/3.000

**NOTES:**

- MATERIAL: POLYPHENYLENE OXIDE 94 V1  
COLOUR BLACK.
- BUTTONS ARE LOCATED BETWEEN  
CIRCUITS 1 & 2 AND N-1 & N  
(WHERE N IS THE NUMBER OF CIRCUITS)
- PART NO. AND CAVITY I.D. TO BE (1.00)/.040 HIGH  
AND RAISED (0.07)/.003 IN A (0.15)/.006 DEEP WELL
- PRODUCT SPECIFICATION: PS-99020-0001

90123 - 0 \* \* \*

INDICATES No. OF CIRCUITS

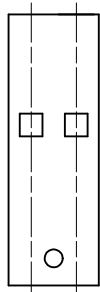
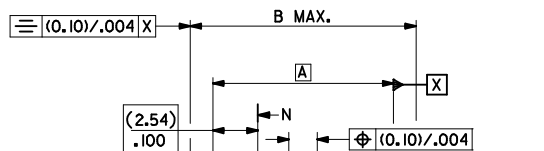
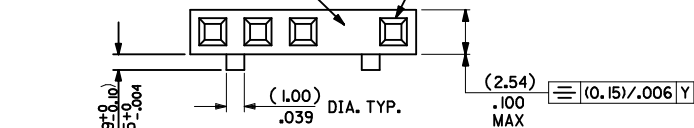
INDICATES No.  
OF BUTTONS.  
1 - 2 BUTTONS  
2 - 4 BUTTONS

90123 - 9 9 \* \* \* VOIDED OPTIONS, PER SHT 2.

<b>ADDED NOTE 4</b> EC NO: S2015-0690 2014/12/19 DRWNG:COH CHKD:SCHEONG 2014/12/23 APPR:KILIM 2014/12/29	QUALITY SYMBOLS	GENERAL TOLERANCES (UNLESS SPECIFIED)	DIMENSION STYLE	SCALE	DESIGN UNITS	THIRD ANGLE PROJECTION	
	$\nabla=0$ $\nabla=0$	mm INCH 4 PLACES ± --- ± --- 3 PLACES ± --- ± .004 2 PLACES ± 0.10 ± --- 1 PLACE ± --- ± --- ANGULAR ± 1/2°	MM/IN	5:1	METRIC		
	DRAFT WHERE APPLICABLE MUST REMAIN WITHIN DIMENSIONS	DRAWN BY DATE J. DENNEHY 2006/05/22 CHECKED BY DATE J. DENNEHY 2006/05/22 APPROVED BY DATE J. DENNEHY 2006/05/22	MATERIAL NO. <b>SEE CHART</b>	TITLE	C-GRID III SINGLE ROW MODULAR CRIMP CONNECTOR HOUSING		
	REV V1	MATERIAL NO. <b>SD-90123</b>	MOLEX INCORPORATED	SHEET NO. 1 OF 2			

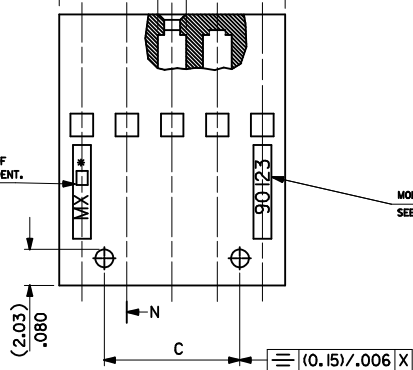
SEE SHT 2 FOR  
VOIDED OPTIONS

CCT. No. 1



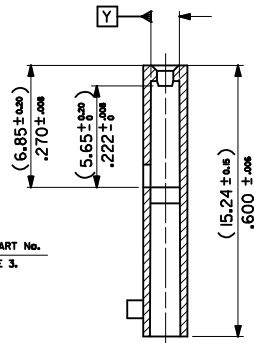
2 CKTS  
ONLY.

MOLEX IDENT, PLACE OF  
MANUF. AND CAVITY IDENT.  
SEE NOTE 3

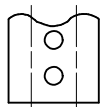


3 TO 32 CKTS.

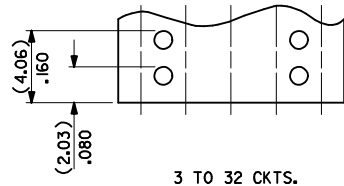
**2 POLARISING BUTTON VERSION**



SECTION N-N  
(THROUGH VOIDS  
WHERE APPLICABLE)



2 CKTS.  
ONLY.



3 TO 32 CKTS.

**4 POLARISING BUTTON VERSION**

REV	DESCRIPTION	QUALITY SYMBOLS	GENERAL TOLERANCES (UNLESS SPECIFIED)		DIMENSION STYLE		SCALE	DESIGN UNITS	THIRD ANGLE PROJECTION	
			mm	INCH	MM/IN	TITLE				
V1	ADDED NOTE 4 EC NO: S2015-0690 DRAWN:COH 2014/12/19 CHKD:SCHEONG 2014/12/23 APPR:KILIM 2014/12/29	▽=0 ▽=0	4 PLACES ±---	±---	DB	DRAWN BY	DATE	TITLE	C-GRID III SINGLE ROW MODULAR CRIMP CONNECTOR HOUSING	
			3 PLACES ±---	±.004	CHECKED BY	DATE				
			2 PLACES ±0.10	±---	APPROVED BY	DATE			Molex MOLEX INCORPORATED	
			1 PLACE ±---	±---	J. DENNEHY	2006/05/22				
			ANGULAR ±1/2°		MATERIAL NO.	DOCUMENT NO.			SHEET NO.	
			DRAFT WHERE APPLICABLE MUST REMAIN WITHIN DIMENSIONS		SEE CHART	SD-90123			1 OF 2	
			THIS DRAWING CONTAINS INFORMATION THAT IS PROPRIETARY TO MOLEX INCORPORATED AND SHOULD NOT BE USED WITHOUT WRITTEN PERMISSION							

NO. OF CKTS	PART NUMBER		DIM A	DIM B	DIM C
	2 BUTT'S	4 BUTT'S			
2	90123-0102	90123-0202	(2.54)/0.100	(5.08)/0.200	---
3	90123-0103	90123-0203	(5.08)/0.200	(7.62)/0.300	(2.54)/0.100
4	90123-0104	90123-0204	(7.62)/0.300	(10.16)/0.400	(5.08)/0.200
5	90123-0105	90123-0205	(10.16)/0.400	(12.70)/0.500	(7.62)/0.300
6	90123-0106	90123-0206	(12.70)/0.500	(15.24)/0.600	(10.16)/0.400
7	90123-0107	90123-0207	(15.24)/0.600	(17.78)/0.700	(12.70)/0.500
8	90123-0108	90123-0208	(17.78)/0.700	(20.32)/0.800	(15.24)/0.600
9	90123-0109	90123-0209	(20.32)/0.800	(22.86)/0.900	(17.78)/0.700
10	90123-0110	90123-0210	(22.86)/0.900	(25.40)/1.000	(20.32)/0.800
11	90123-0111	90123-0211	(25.40)/1.000	(27.94)/1.100	(22.86)/0.900
12	90123-0112	90123-0212	(27.94)/1.100	(30.48)/1.200	(25.40)/1.000
13	90123-0113	90123-0213	(30.48)/1.200	(33.02)/1.300	(27.94)/1.100
14	90123-0114	90123-0214	(33.02)/1.300	(35.56)/1.400	(30.48)/1.200
15	90123-0115	90123-0215	(35.56)/1.400	(38.10)/1.500	(33.02)/1.300
16	90123-0116	90123-0216	(38.10)/1.500	(40.64)/1.600	(35.56)/1.400
17	90123-0117	90123-0217	(40.64)/1.600	(43.18)/1.700	(38.10)/1.500
18	90123-0118	90123-0218	(43.18)/1.700	(45.72)/1.800	(40.64)/1.600
19	90123-0119	90123-0219	(45.72)/1.800	(48.26)/1.900	(43.18)/1.700
20	90123-0120	90123-0220	(48.26)/1.900	(50.80)/2.000	(45.72)/1.800
21	90123-0121	90123-0221	(50.80)/2.000	(53.34)/2.100	(48.26)/1.900
22	90123-0122	90123-0222	(53.34)/2.100	(55.88)/2.200	(50.80)/2.000
23	90123-0123	90123-0223	(55.88)/2.200	(58.42)/2.300	(53.34)/2.100
24	90123-0124	90123-0224	(58.42)/2.300	(60.96)/2.400	(55.88)/2.200
25	90123-0125	90123-0225	(60.96)/2.400	(63.50)/2.500	(58.42)/2.300
26	90123-0126	90123-0226	(63.50)/2.500	(66.04)/2.600	(60.96)/2.400
27	90123-0127	90123-0227	(66.04)/2.600	(68.58)/2.700	(63.50)/2.500
28	90123-0128	90123-0228	(68.58)/2.700	(71.12)/2.800	(66.04)/2.600
29	90123-0129	90123-0229	(71.12)/2.800	(73.66)/2.900	(68.58)/2.700
30	90123-0130	90123-0230	(73.66)/2.900	(76.20)/3.000	(71.12)/2.800
31	90123-0131	90123-0231	(76.20)/3.000	(78.74)/3.100	(73.66)/2.900
32	90123-0132	90123-0232	(78.74)/3.100	(81.28)/3.200	(76.20)/3.000

NOTES:

- MATERIAL: POLYPHENYLENE OXIDE 94 V1  
COLOUR BLACK.
- BUTTONS ARE LOCATED BETWEEN  
CIRCUITS 1 & 2 AND N-1 & N  
(WHERE N IS THE NUMBER OF CIRCUITS)
- PART NO. AND CAVITY I.D. TO BE (1.00)/.040 HIGH  
AND RAISED (0.07)/.003 IN A (0.15)/.006 DEEP WELL
- PRODUCT SPECIFICATION: PS-99020-0001

90123 - 0 \* \* \*

INDICATES No. OF CIRCUITS

INDICATES No.  
OF BUTTONS.  
1 - 2 BUTTONS  
2 - 4 BUTTONS

90123 - 9 9 \* \* \* VOIDED OPTIONS, PER SHT 2.