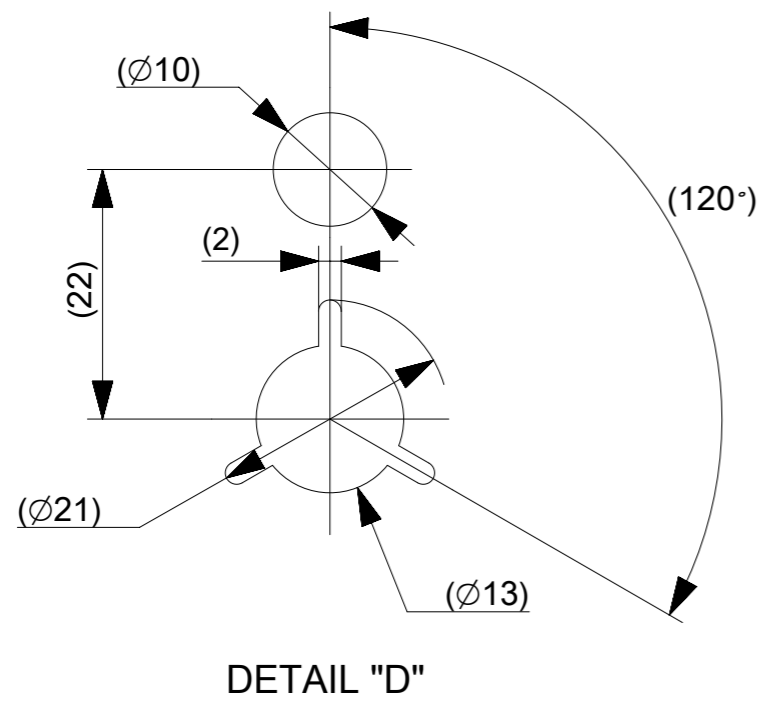
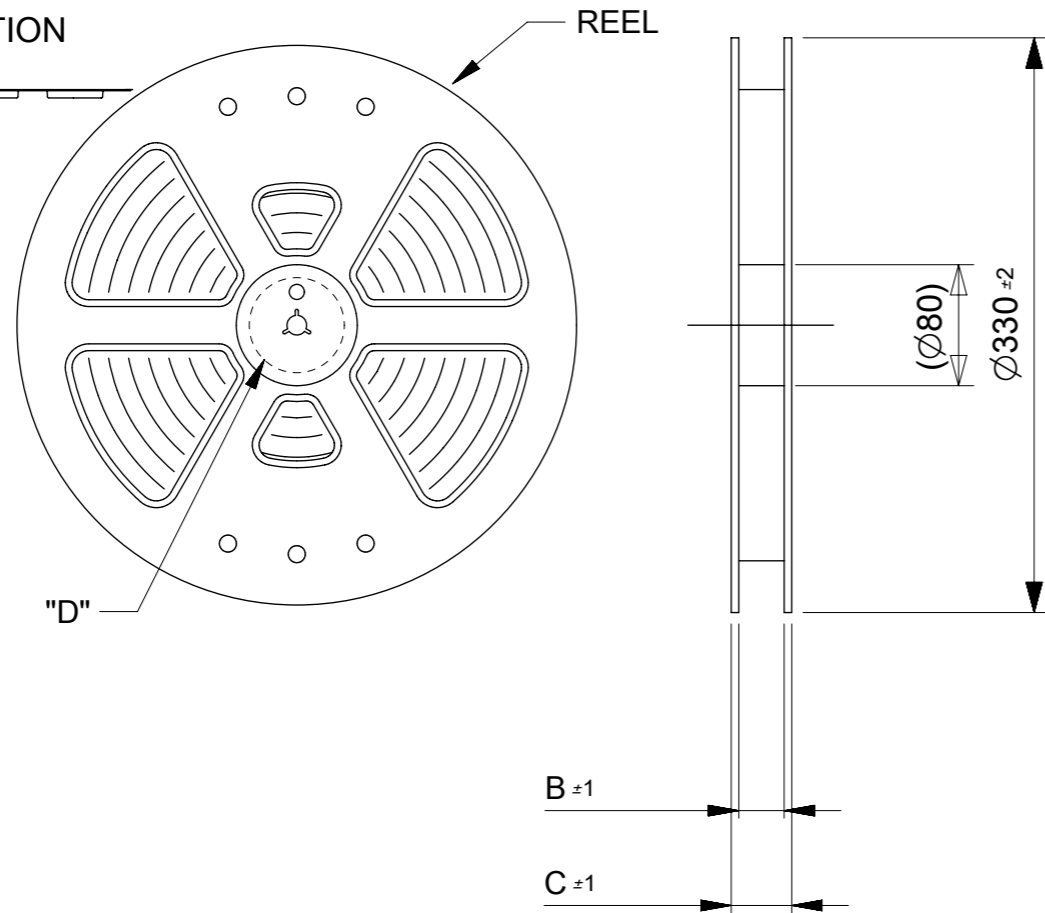
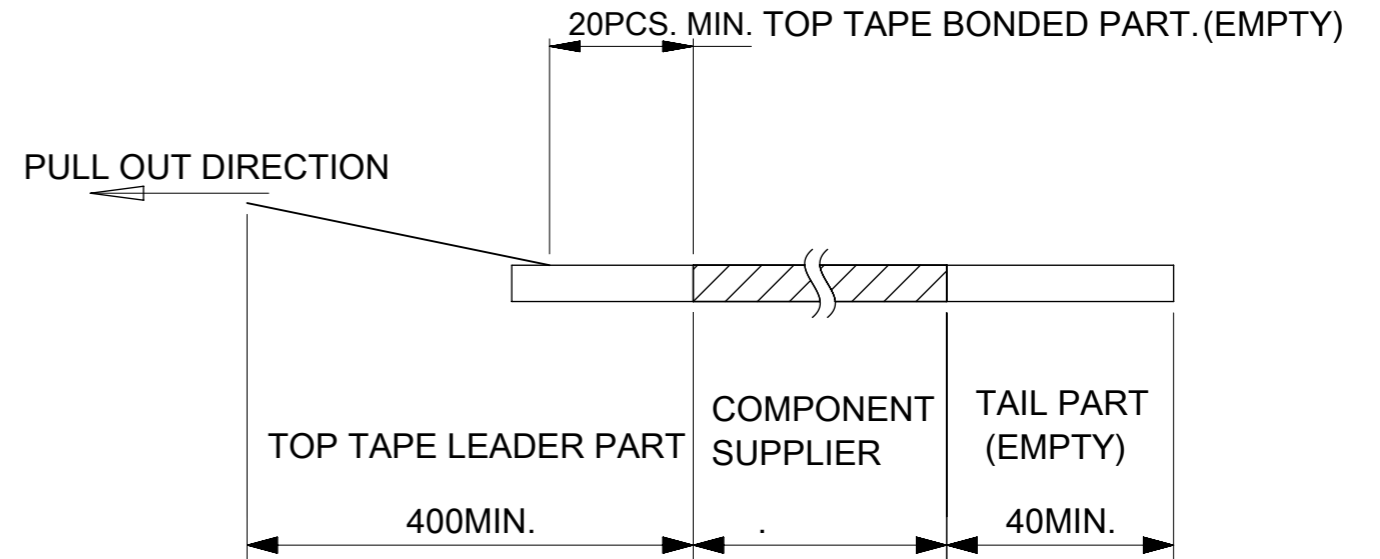


PULL OUT DIRECTION



NOTES

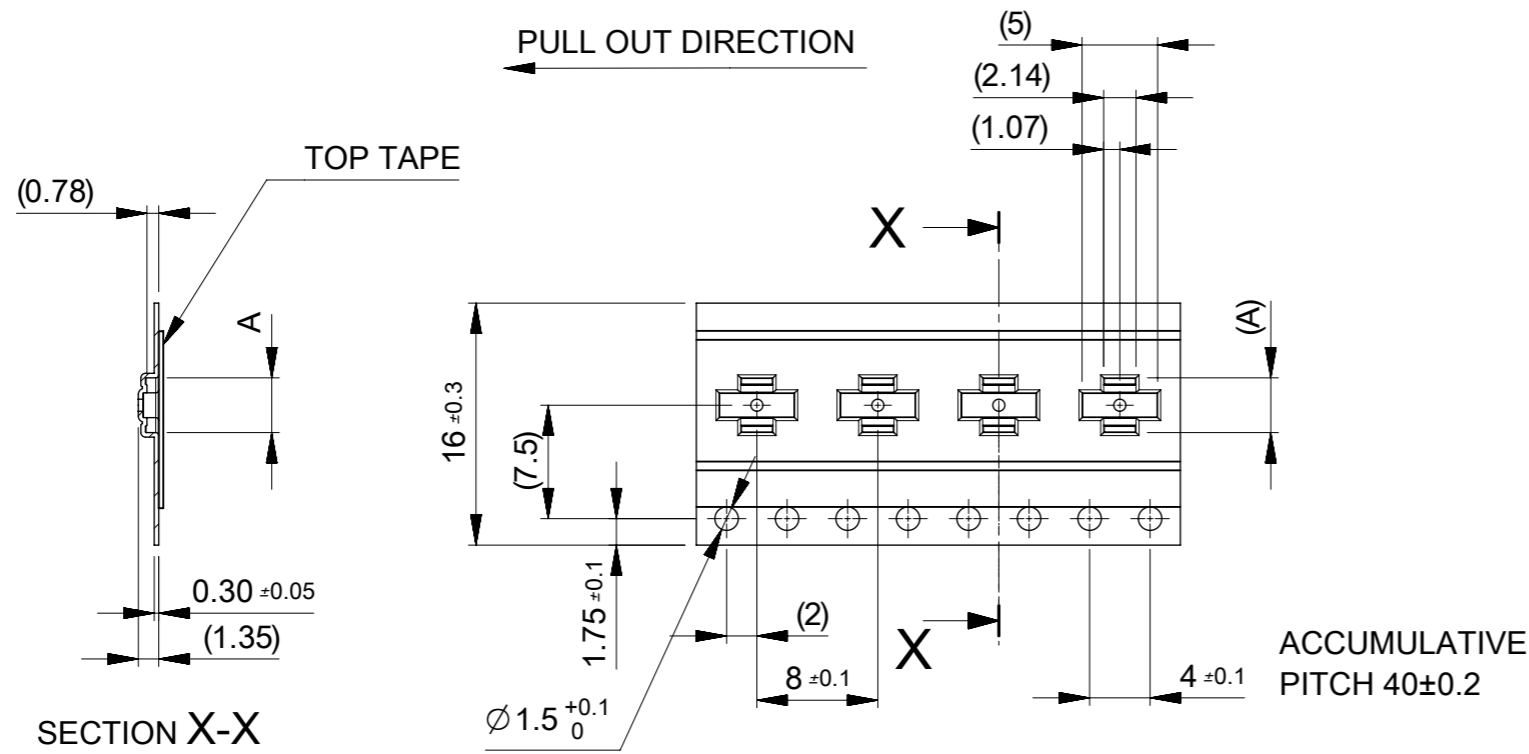
- RE DETAILED DIMENSION, SEE PRODUCT DRAWING.
- NUMBER OF CONNECTORS : 6000 PCS/REEL.
- LEAD TAPE LENGTH.



- TOP TAPE PEEL FORCE IS DEFINED BY IEC60286-3
- MATERIAL  
CARRER TAPE :POLYSTYRENE  
TOP TAPE :PET , OTHER  
REEL :POLYSTYRENE(PS)(RECYCLE MATERIAL CONTAINED)
- ELV AND RoHS COMPLIANT

MODEL NO. 505066-\*\*20

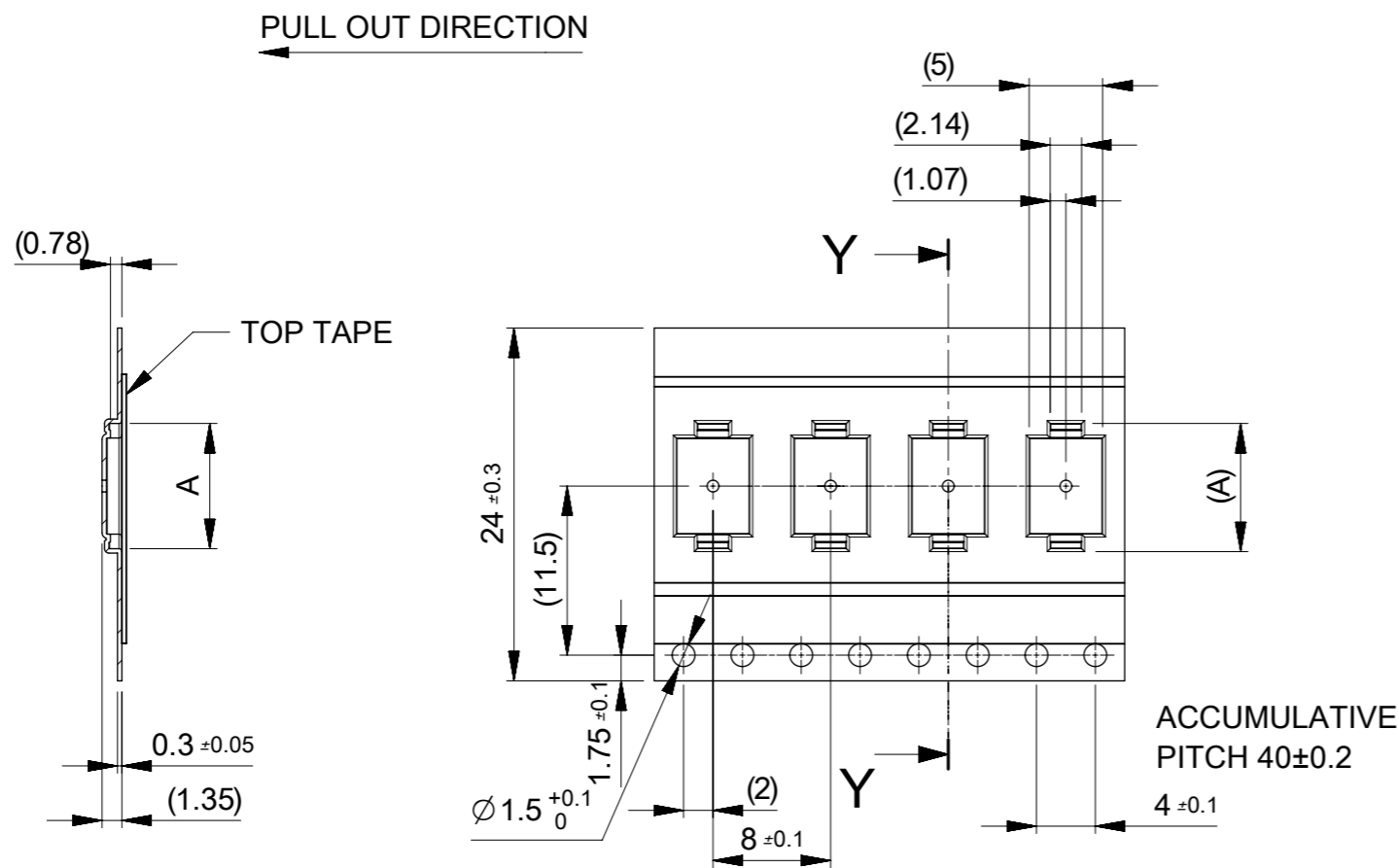
THIS DRAWING CONTAINS INFORMATION THAT IS PROPRIETARY TO MOLEX ELECTRONIC TECHNOLOGIES, LLC AND SHOULD NOT BE USED WITHOUT WRITTEN PERMISSION										
RELEASED	EC NO. 109660	2016/11/17	GENERAL TOLERANCES (UNLESS SPECIFIED)		DIMENSION UNITS	SCALE	<b>molex</b> <sup>®</sup>			
	DRWN: TSOMEYA	2016/12/01	ANGULAR TOL ± 1.0 °		MM	1:5				
	CHK'D: KTANAKA03	2016/12/01	4 PLACES ± 0.01	3 PLACES ± 0.03	DRWN BY	DATE	0.35 BB CONN. H=0.6 SSB6 RP REC ASSY			
	APPR: TKUSUHARA01	2016/12/01	2 PLACES ± 0.05	1 PLACE ± 0.1	TSOMEYA	2016/11/17				
			0 PLACES ± 0.2	DRAFT WHERE APPLICABLE MUST REMAIN WITHIN DIMENSIONS		CHK'D BY	DATE	PRODUCT CUSTOMER DRAWING		
					KTANAKA03	2016/12/01				
					APPR BY	DATE	SERIES MATERIAL NUMBER CUSTOMER			
					TKUSUHARA01	2016/12/01				505066
					DRAWING SIZE	THIRD ANGLE PROJECTION	DOCUMENT NUMBER DOC TYPE DOC PART SHEET NUMBER			
					A3					5050660000



16	21.4	17.4	7.82	505066-3020	○	---	30		
			6.77	505066-2420	○	---	24		
			6.42	505066-2220	○	---	22		
			6.07	505066-2020	○	---	20		
			5.72	505066-1820	---	---	18		
			5.37	505066-1620	○	---	16		
			5.02	505066-1420	○	---	14		
			4.67	505066-1220	○	---	12		
			4.32	505066-1020	○	---	10		
			3.97	505066-0820	---	○	8		
3.62	505066-0620	○	---	6					
キャリアテープ幅 CARRIER TAPE WIDTH			C	B	(A)	MATERIAL No.	HIGH VOL. TOOL	LOW VOL. TOOL	CIRCUIT
							SAMPLE PREPARATION		

THIS DRAWING CONTAINS INFORMATION THAT IS PROPRIETARY TO MOLEX ELECTRONIC TECHNOLOGIES, LLC AND SHOULD NOT BE USED WITHOUT WRITTEN PERMISSION

EC NO: 109660 DRWN: TSOMEYA CHK'D: KTANAKA03 APPR: TKUSUHARA01	2016/11/17	GENERAL TOLERANCES (UNLESS SPECIFIED) ANGULAR TOL ± 1.0 ° 4 PLACES ± 0.01 3 PLACES ± 0.03 2 PLACES ± 0.05 1 PLACE ± 0.1 0 PLACES ± 0.2	DIMENSION UNITS	SCALE				
	2016/12/01		MM	2:1				
	2016/12/01		DRWN BY	DATE		TSOMEYA	2016/11/17	
			CHK'D BY	DATE		KTANAKA03	2016/12/01	
			APPR BY	DATE		TKUSUHARA01	2016/12/01	
RELEASED			DRAWING SIZE	THIRD ANGLE PROJECTION	PRODUCT CUSTOMER DRAWING			
			A3		SERIES	MATERIAL NUMBER	CUSTOMER	
					505066	SEE CHART	GENERAL	
					DOCUMENT NUMBER	DOC TYPE	DOC PART	SHEET NUMBER
					5050660000	PSD	001	2 OF 3

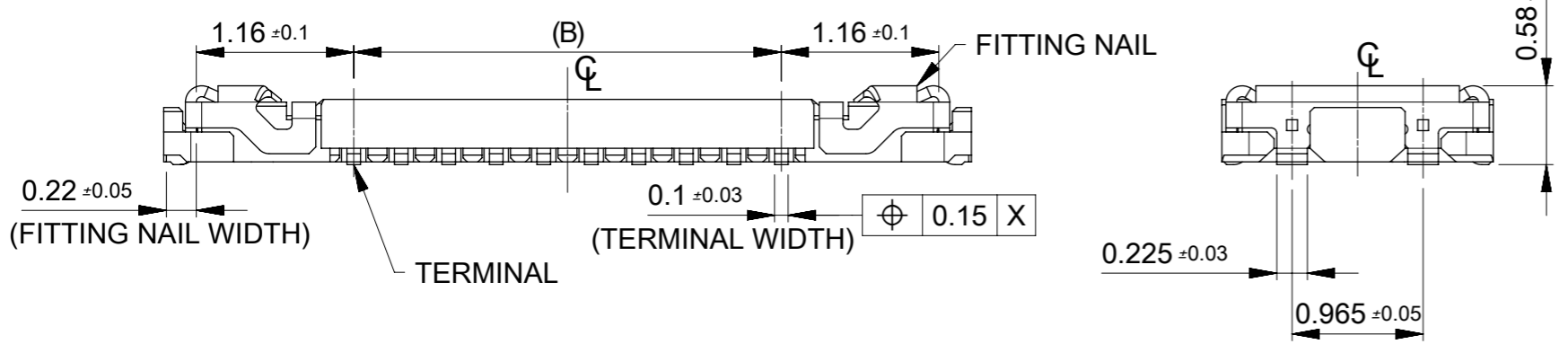
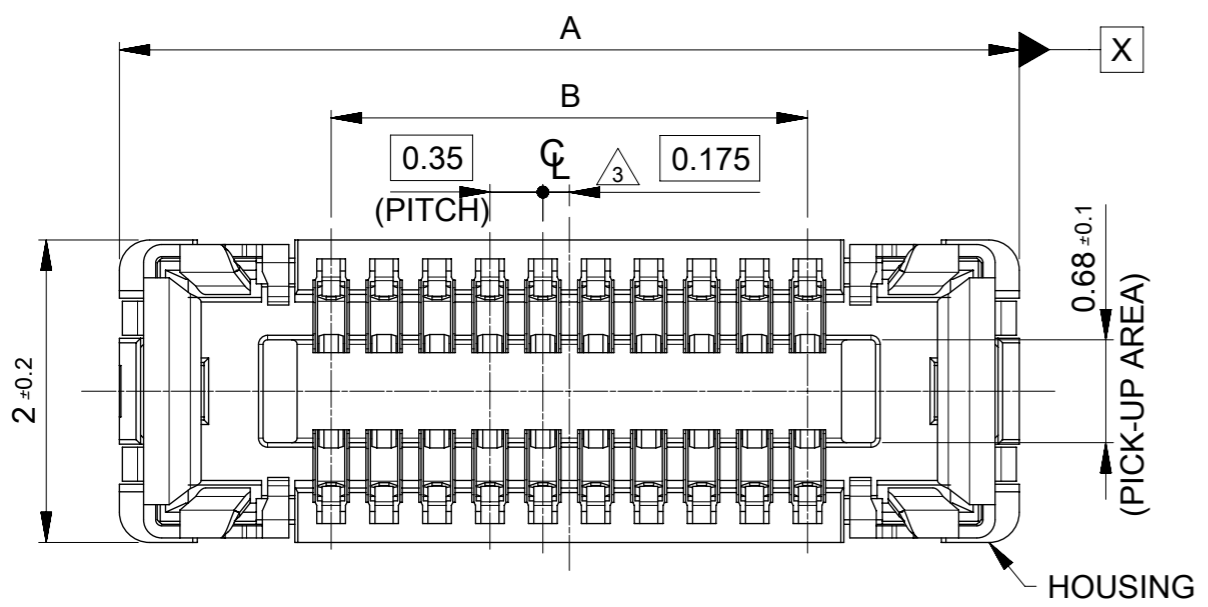


SECTION Y-Y

24	29.4	25.4	13.77	505066-6420	---	---	64	
			13.07	505066-6020	---	---	60	
			12.02	505066-5420	○	---	54	
			11.32	505066-5020	○	---	50	
			10.99	505066-4820	○	---	48	
			10.62	505066-4620	---	---	46	
			9.92	505066-4220	○	---	42	
			9.57	505066-4020	○	---	40	
			8.52	505066-3420	○	---	34	
キャリアテープ幅 CARRIER TAPE WIDTH		C	B	(A)	MATERIAL No.	HIGH VOL TOOL	LOW VOL TOOL	CIRCUIT
						SAMPLE PREPARATION		

THIS DRAWING CONTAINS INFORMATION THAT IS PROPRIETARY TO MOLEX ELECTRONIC TECHNOLOGIES, LLC AND SHOULD NOT BE USED WITHOUT WRITTEN PERMISSION

EC NO: 109660 DRWN: TSOMEYA CHK'D: KTANAKA03 APPR: TKUSUHARA01	2016/11/17	GENERAL TOLERANCES (UNLESS SPECIFIED)	DIMENSION UNITS	SCALE				
	2016/12/01	ANGULAR TOL ± 1.0 °	MM	2:1				
	2016/12/01	4 PLACES ± 0.01	DRWN BY	DATE		0.35 BB CONN. H=0.6 SSB6 RP REC ASSY		
		3 PLACES ± 0.03	TSOMEYA	2016/11/17				
		2 PLACES ± 0.05	CHK'D BY	DATE		PRODUCT CUSTOMER DRAWING		
	1 PLACE ± 0.1	KTANAKA03	2016/12/01					
	0 PLACES ± 0.2	APPR BY	DATE	TKUSUHARA01	2016/12/01			
		DRAFT WHERE APPLICABLE MUST REMAIN WITHIN DIMENSIONS	DRAWING SIZE	THIRD ANGLE PROJECTION	SERIES	MATERIAL NUMBER	CUSTOMER	
			A3		505066	SEE CHART	GENERAL	
					DOCUMENT NUMBER	DOC TYPE	DOC PART	SHEET NUMBER
					5050660000	PSD	001	3 OF 3



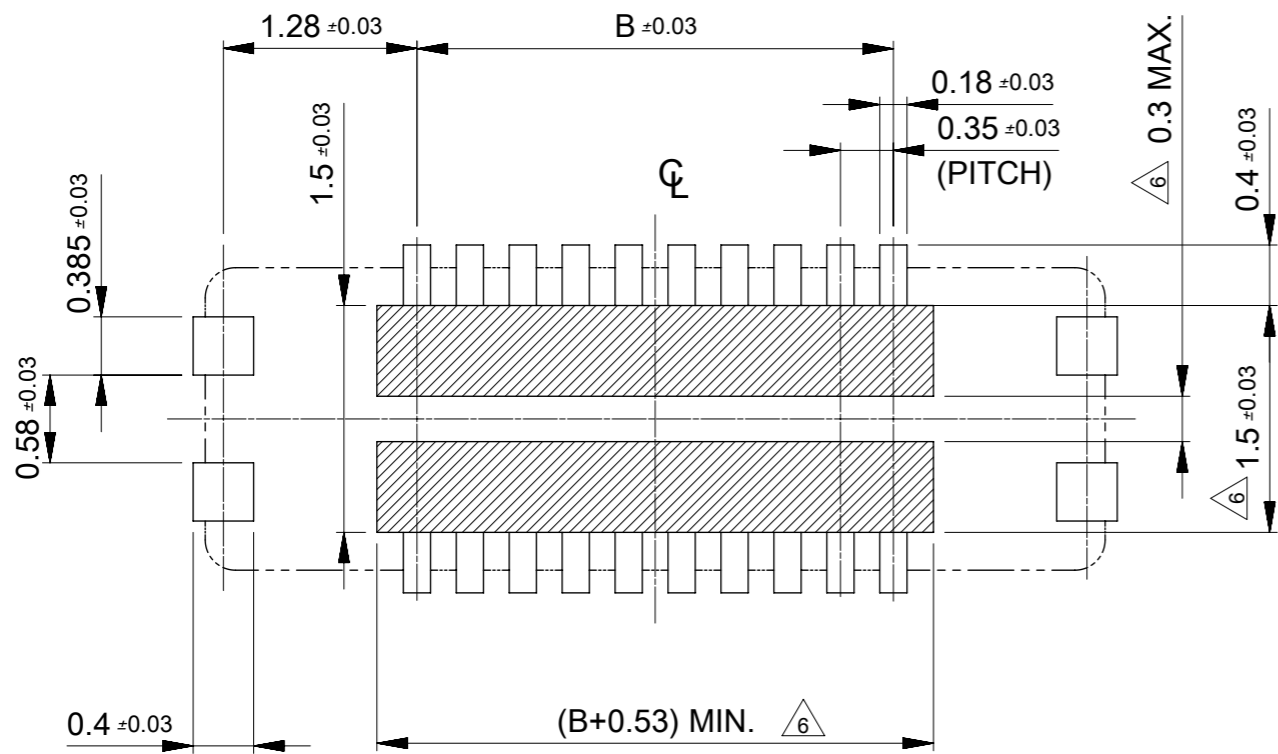
**NOTES**

- 1 MATERIAL  
 WAFER: LIQUID CRYSTAL POLYMER UL94V-0 (COLOR: BLACK)  
 TERMINAL: COPPER ALLOY  
 FITTING NAIL: COPPER ALLOY
- 2 PLATING  
 TERMINAL:  
 CONTACT AREA: SEPARATED GOLD PLATING (0.1 MICROMETER MINIMUM).  
 SOLDER TAIL AREA: SEPARATED GOLD PLATING.  
 UNDERPLATE: NICKEL OVERALL.  
 \*DIVIDE INTO PARTS THE GOLD PLATING OF THE CONTACT AND THE TAIL PART BY THE NICKEL PLATING.  
 FITTING NAIL:  
 CONTACT AREA: SEPARATED GOLD PLATING (0.1 MICROMETER MINIMUM).  
 SOLDER TAIL AREA: SEPARATED GOLD PLATING.  
 UNDERPLATE: NICKEL OVERALL.  
 \*DIVIDE INTO PARTS THE GOLD PLATING OF THE CONTACT AND THE TAIL PART BY THE NICKEL PLATING.  
 \*EVEN THOUGH GOLD PLATING ON THE TOP SURFACE OF NAIL MIGHT BE THIN, NO FUNCTIONAL PROBLEM.
- 3 APPLY FOR (CIRCUIT/2)=EVEN.
- 4 MATE WITH : 505070-\*\*10/505070-\*\*20
- 5 TAIL AND FITTING NAIL COPLANARITY TO BE 0.08 MAXIMUM.
- 6 PROHIBITED AREA OF PATTERN WIRING AND SOLDER.  
 (FOR EACH AREA, THE WIRING THAT TOUCHES ON THE SOLDER CAN BE ATTACHED, THEN COVERED WITH A FILM TO KEEP SOLDER OUT).
- 7 ELV and RoHS COMPLIANT.

11.90	14.70	505066-7020	---	---	70
10.85	13.65	505066-6420	---	---	64
10.15	12.95	505066-6020	---	---	60
9.80	12.60	505066-5820	---	---	58
9.10	11.90	505066-5420	○	---	54
8.40	11.20	505066-5020	○	---	50
8.05	10.85	505066-4820	○	---	48
7.70	10.50	505066-4620	---	---	46
7.00	9.80	505066-4220	○	---	42
6.65	9.45	505066-4020	○	---	40
6.30	9.10	505066-3820	---	---	38
5.60	8.40	505066-3420	○	---	34
4.90	7.70	505066-3020	○	---	30
3.85	6.65	505066-2420	○	---	24
3.50	6.30	505066-2220	○	---	22
3.15	5.95	505066-2020	○	---	20
2.80	5.60	505066-1820	---	---	18
2.45	5.25	505066-1620	○	---	16
2.10	4.90	505066-1420	○	---	14
1.75	4.55	505066-1220	○	---	12
1.40	4.20	505066-1020	○	---	10
1.05	3.85	505066-0820	---	○	8
0.70	3.50	505066-0620	○	---	6
B	A	EMBOSSED TAPE PACKAGE	HIGH VOL. TOOL	LOW VOL. TOOL	CIRCUIT
ORDER NO.		SAMPLE PREPARATION ○ : TOOLED △ : WORK IN PROCESS --- : TOOLING TO BE CONFIRMED			
CONNECTOR SERIES No. : 505066-**09					

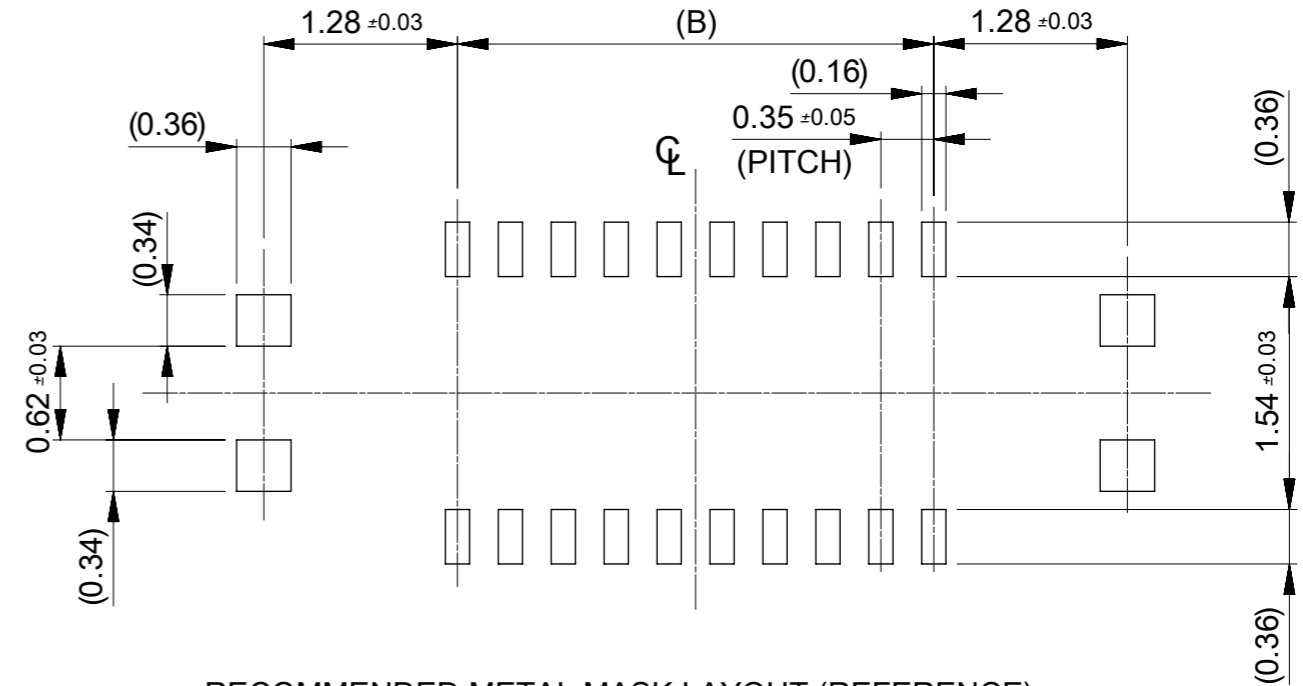
THIS DRAWING CONTAINS INFORMATION THAT IS PROPRIETARY TO MOLEX ELECTRONIC TECHNOLOGIES, LLC AND SHOULD NOT BE USED WITHOUT WRITTEN PERMISSION

REVISED	2016/12/06	GENERAL TOLERANCES (UNLESS SPECIFIED)	DIMENSION UNITS	SCALE	<b>molex</b>		
	2016/12/06	ANGULAR TOL ± 1.0 °	MM	20:1			
	2016/12/06	4 PLACES ± 0.001	DRWN BY	DATE		0.35 BB CONN. H=0.6 SSB6 RP REC ASSY	
	EC NO: 111141 DRWN: TSOMEYA CHK'D: TASAKAWA APPR: TKUSUHARA01	3 PLACES ± 0.003	TSOMEYA	2016/06/21			
		2 PLACES ± 0.03	CHK'D BY	DATE			
1 PLACE ± 0.1		KTANAKA03	2016/12/01				
0 PLACES ± 0.2		APPR BY	DATE				
DRAFT WHERE APPLICABLE MUST REMAIN WITHIN DIMENSIONS		TKUSUHARA01	2016/12/01	PRODUCT CUSTOMER DRAWING			
		DRAWING SIZE	THIRD ANGLE PROJECTION	SERIES	MATERIAL NUMBER	CUSTOMER	
		A3		505066	SEE CHART	GENERAL	
				DOCUMENT NUMBER	DOC TYPE	DOC PART	SHEET NUMBER
				5050661000	PSD	001	1 OF 2



RECOMMENDED P.W. BOARD PATTERN LAYOUT (REFERENCE)

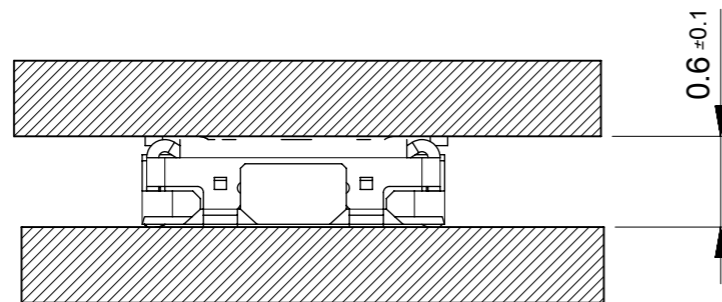
△ PROHIBITED AREA OF PATTERN WIRING AND SOLDER  
 (FOR EACH AREA, THE WIRING THAT TOUCHES ON THE SOLDER CAN BE ATTACHED, THEN COVERED WITH A FILM TO KEEP SOLDER OUT)



RECOMMENDED METAL MASK LAYOUT (REFERENCE)

RECOMMENDED THICKNESS OF METAL MASK : t=0.08mm

RECOMMENDED OPEN APERTURE RATIO OF METAL MASK : 80%



MATED CONDITION

THIS DRAWING CONTAINS INFORMATION THAT IS PROPRIETARY TO MOLEX ELECTRONIC TECHNOLOGIES, LLC AND SHOULD NOT BE USED WITHOUT WRITTEN PERMISSION

EC NO: 111141 DRWN: TSOMEYA CHK'D: TASAKAWA APPR: TKUSUHARA01	2016/12/06	2016/12/06	2016/12/06	GENERAL TOLERANCES (UNLESS SPECIFIED) ANGULAR TOL ± 1.0 ° 4 PLACES ± 0.001 3 PLACES ± 0.003 2 PLACES ± 0.03 1 PLACE ± 0.1 0 PLACES ± 0.2 DRAFT WHERE APPLICABLE MUST REMAIN WITHIN DIMENSIONS	DIMENSION UNITS	SCALE			
	REVISED	MM	20:1						
	TSOMEYA	DATE	2016/06/21		0.35 BB CONN. H=0.6 SSB6 RP REC ASSY				
	KTANAKA03	DATE	2016/12/01						
	TKUSUHARA01	DATE	2016/12/01		PRODUCT CUSTOMER DRAWING				
DRWING SIZE	THIRD ANGLE PROJECTION	SERIES: 505066 MATERIAL NUMBER: SEE CHART CUSTOMER: GENERAL							
A3		DOCUMENT NUMBER: 5050661000 DOC TYPE: PSD DOC PART: 001 SHEET NUMBER: 2 OF 2							