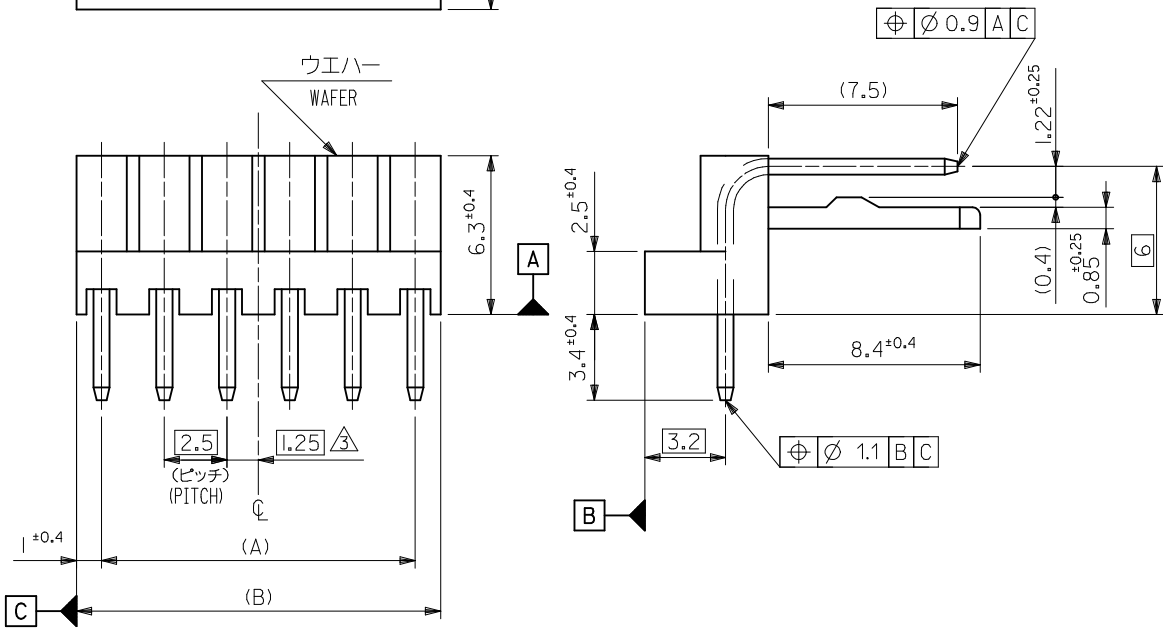
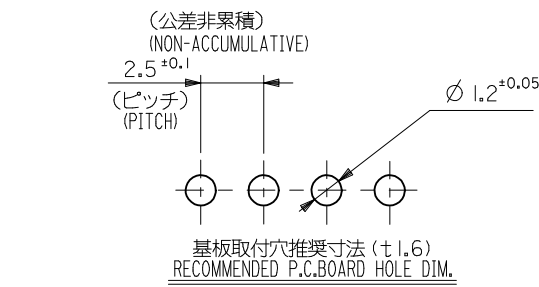


- 注記
NOTES :
- そりは長さ25.4に対して0.2MAX. CAMBER MUST BE WITHIN 0.2MAX. PER 25.4 .
 - 材料(MATERIAL)
ウエハー:ポリアミド, UL94V-0
WAFER:POLYAMIDE, UL94V-0
ピン:φ0.635 黄銅, 銅下地錫メッキ
PIN:φ0.635 BRASS, TIN OVER COPPER PLATING.
 - 全極数が偶数の場合のみ適用。
APPLY FOR EVEN CIRCUITS PRODUCT ONLY.
 - ELV 及び RoHS 適合品
ELV AND ROHS COMPLIANT.



49.5	47.5	22 05	1202	20
47	45		1192	19
44.5	42.5		1182	18
42	40		1172	17
39.5	37.5		1162	16
37	35		1152	15
34.5	32.5		1142	14
32	30		1132	13
29.5	27.5		1122	12
27	25		1112	11
24.5	22.5		1102	10
22	20		1092	9
19.5	17.5		1082	8
17	15		1072	7
14.5	12.5		1062	6
12	10		1052	5
9.5	7.5		1042	4
7	5		1032	3
4.5	2.5	22 05	1022	2
(B)	(A)	ORDER No.		極数 CKT.



REVISED EC NO.: J2012-0974 2012/01/30 DRWN:KASHIO CHKD:KASAKAWA APPR:NUKITA 2013/06/03	DESCRIPTION	GENERAL TOLERANCES (UNLESS SPECIFIED)		DIMENSION STYLE	SCALE	DESIGN UNITS	MODEL No. : 5046-**A	
		10 UNDER ±0.2		MM ONLY	5:1	METRIC	THIRD ANGLE PROJECTION	
		10 OVER 30 UNDER ±0.25		DRAWN BY	DATE	TITLE		KK2.5 R/A WAFER ASSY
		30 OVER ±0.3		Y. MIZUNO	1992/01/09			
REV	J	ANGULAR ±3 °		CHECKED BY	DATE	MATERIAL NO.		
		DRAFT WHERE APPLICABLE MUST REMAIN WITHIN DIMENSIONS		H. HIRAMOTO	1994/11/11	DOCUMENT NO.		
				APPROVED BY	DATE	SEE CHART		SD-5046-NA
				SIZE	THIS DRAWING CONTAINS INFORMATION THAT IS PROPRIETARY TO MOLEX INCORPORATED AND SHOULD NOT BE USED WITHOUT WRITTEN PERMISSION			
				A3				
						SHEET NO. 1 OF 1		

E

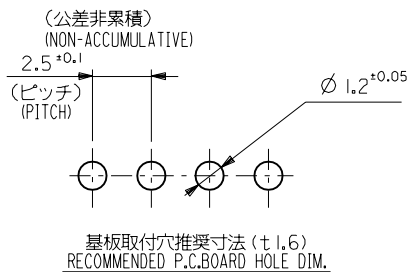
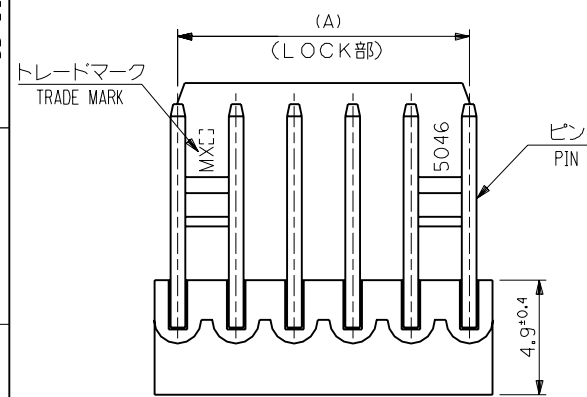
D

C

B

A

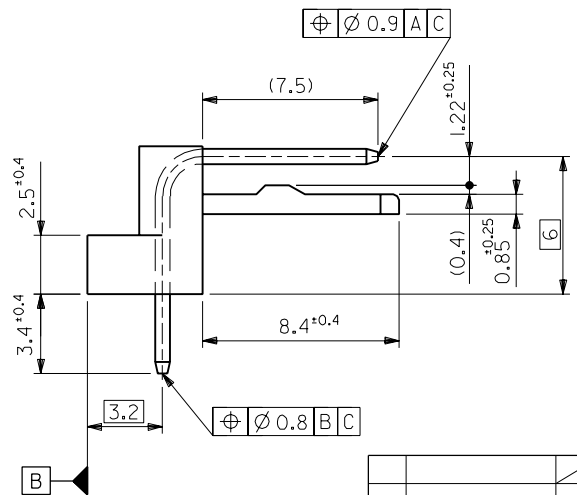
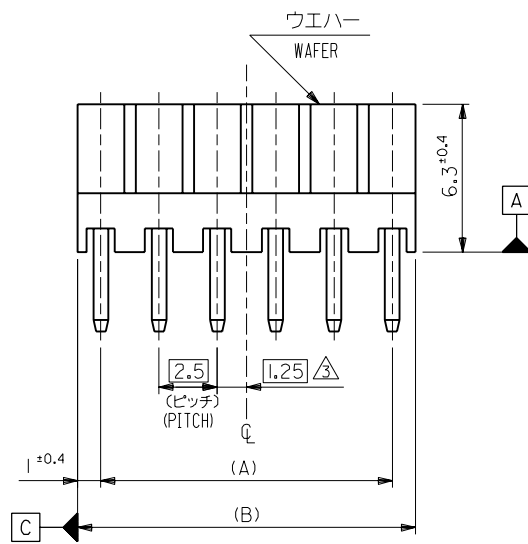
MM DIMENSIONS IN METRIC DO NOT SCALE DRAWING



注記 NOTES :

- それは長さ25.4に対して0.2MAX. CAMBER MUST BE WITHIN 0.2MAX. PER 25.4 .
 - 材料 (MATERIAL)
 ウエハー : 66ナイロン, UL94V-0
 WAFER: 66NYLON, UL94V-0
 ピン : φ0.635 黄銅, 銅下地錫メッキ
 PIN: φ0.635 BRASS, TIN OVER COPPER PLATING.
- △ 全極数が偶数の場合のみ適用。
 APPLY FOR EVEN CIRCUITS PRODUCT ONLY.

49.5	47.5	22-05-1202	5046-20A	20
47	45	-1192	-19A	19
44.5	42.5	-1182	-18A	18
42	40	-1172	-17A	17
39.5	37.5	-1162	-16A	16
37	35	-1152	-15A	15
34.5	32.5	-1142	-14A	14
32	30	-1132	-13A	13
29.5	27.5	-1122	-12A	12
27	25	-1112	-11A	11
24.5	22.5	-1102	-10A	10
22	20	-1092	-09A	9
19.5	17.5	-1082	-08A	8
17	15	-1072	-07A	7
14.5	12.5	-1062	-06A	6
12	10	-1052	-05A	5
9.5	7.5	-1042	-04A	4
7	5	-1032	-03A	3
4.5	2.5	22-05-1022	5046-02A	2
(B)	(A)	EDP NO.	ENG.NO.	極数 CKT.



角度 ANGLE	±3°					
30以上 OVER	+0.3					
10以上 30未満 UNDER	+0.25	H	変更 REVISD	(40895)	M.S	H.H
10未満 UNDER	+0.2	G	変更及び再作図 REVISD & REDRAWN	(20018)	Y.M	H.H
一般公差 GENERAL TOLERANCES		記号 LTR	変更内容 REVISION RECORD	DR. CHK.	日付 DATE	

材料 MATERIAL	注記参照 SEE NOTE
仕上げ FINISH	---
適用電線範囲 WIRE RANGE	---
被覆外径 INS. RANGE	---
DRAWN BY '92/1/3	CHK'D BY '94/1/1
Y.MIZUNO	Y.M.HIRAMOTO
APP'D BY '94/1/1	尺度 SCALE 5 : 1
M.FUKUSHIMA	

MOLEX-JAPAN CO.,LTD.
 日本モレックス株式会社

REVISE ONLY ON CAD SYSTEM

TITLE 名称
 KK2.5 RIGHT ANGLE
 WAFER ASS'Y

DWG. NO. SD-5046-NA

REV H